

FOIL STICKER APPLICATION INSTRUCTIONS

Note: When applicable, foil sticker should be applied to meter before installation.

Foil stickers must be applied to meters for installation in meter boxes that are not completely manufactured of a metallic material (example: plastic, concrete or combination of materials).

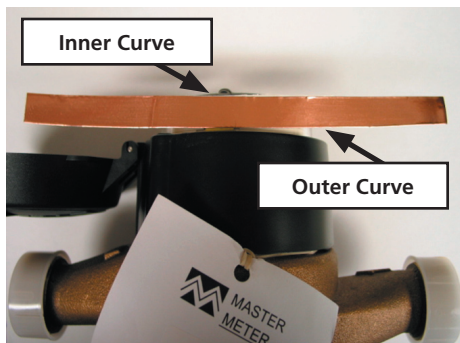
Do not apply stickers to meters installed in metallic meter boxes with metallic covers.

Curing time for sticker adhesive is 24 hours, however, meters may be installed immediately after sticker application.



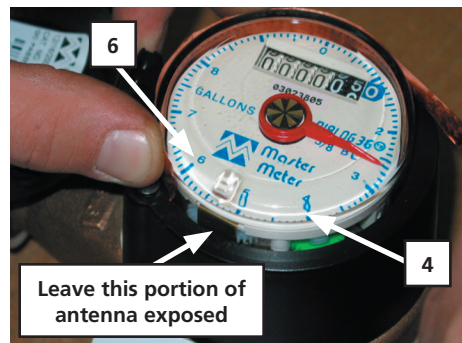
STEP 1

Thoroughly cleanse the side perimeter of the register glass by applying a glass-cleansing agent to rid the lens of dirt or residue and wipe clean with either a dry cloth or paper towel. Windex or other common glass cleaners may be used, however, we recommend using common rubbing alcohol. Make sure the lens is completely dry before applying the sticker.



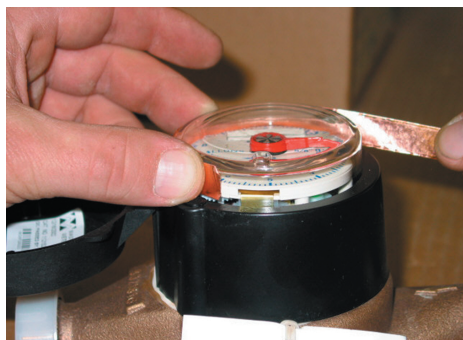
STEP 2

The sticker is designed with a slightly curved edge to fit the register glass; be sure to orient the sticker as shown below where the outer curved edge of the sticker is positioned down towards the meter. When the sticker is applied it should fit smoothly onto the glass.



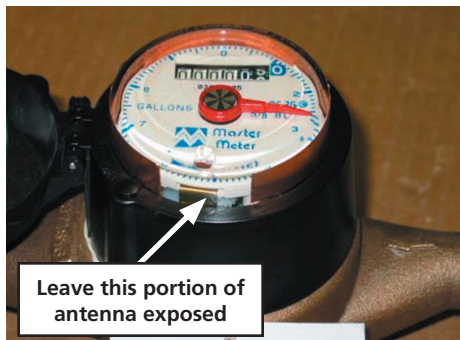
STEP 3

Apply one end of the copper sticker to the side of the glass, starting from number 6 on the register face and working your way around clockwise to number 4 or to 4.5, making sure not to apply sticker over the exposed part of the antenna.



STEP 4

The foil sticker must be firmly wrapped around the register glass. Applying pressure to the foil sticker during application will insure proper adhesion.



STEP 5

After application, the result should be as depicted below. Sticker should be wrapped around register glass, leaving a portion of the antenna exposed.

