

INSTALLATION INSTRUCTIONS



Proper Residential Meter
Installation in Pit Setting

ATTENTION:

The digital portion of the transceiver has been tested and found to comply with the limits for a Class B digital device, pursuant to part 15 of the FCC Rules. These limits are designed to provide reasonable protection against harmful interference in a residential installation. This equipment generates, uses and can radiate radio frequency energy and, if not installed and used in accordance with the instructions, may cause harmful interference to radio communications. However, there is no guarantee that interference will not occur in a particular installation. If this equipment does cause harmful interference to radio or television reception, which can be determined by turning the equipment off and on, the user is encouraged to try to correct the interference by one or more of the following measures:

1. Reorient or relocate the receiving antenna.
2. Increase the separation between the equipment and receiver.
3. Connect the equipment into an outlet on a circuit different from that to which the receiver is connected.
4. Consult the dealer or an experienced radio/TV technician for help.

RECOMMENDED INSTALLATION PROCEDURE

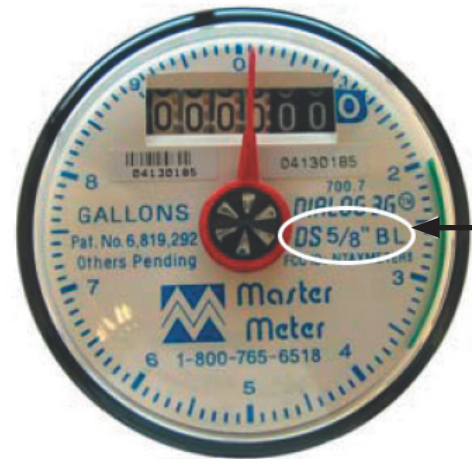
To insure reception with maximum transmission range of the 3G DS meters

The user and the installer should be aware that changes and modifications to the equipment not expressly approved by Master Meter could void warranty and the user's authority to operate the equipment. Professionally trained personnel should install the equipment.

NOTE: The DS register does not require a copper band around the lens. Do not apply copper band.

Pit Setting

1. Meter should be installed as close to the center of the meter box as possible.
2. Distance between the top of the installed meter and the metal pit lid should be between 4 and 8 inches for optimum performance. This, however, will vary depending on freeze line in certain areas.



The DS register
face plate is easily
identifiable by the
labeling "DS"

This device complies with Part 15 of FCC Rules. Operation is subject to the following two conditions:

(1) This device may not cause harmful interference, and (2) this device must accept any interference received, including interference that may cause undesired operation.

WARNING

Sensitive Electronics Inside

HANDLE CAREFULLY